



EDEN MIDCALF
— SALES & LETTINGS —

£279,950
Comber Grove
Kinver, DY7 6EY

PROPERTY SUMMARY

A large two bedroom ground floor apartment enjoying delightful views over historic Kinver village and towards nearby countryside. Located within the highly sought-after Kinver Mount development, within easy reach of the village amenities, the property offers a generous layout including two double bedrooms, the master benefiting from an en-suite shower room. The building is set within beautifully maintained communal gardens and grounds, together with allocated off-road parking for one car within a gated residents' car park. Available with no upward chain. EPC=D

2

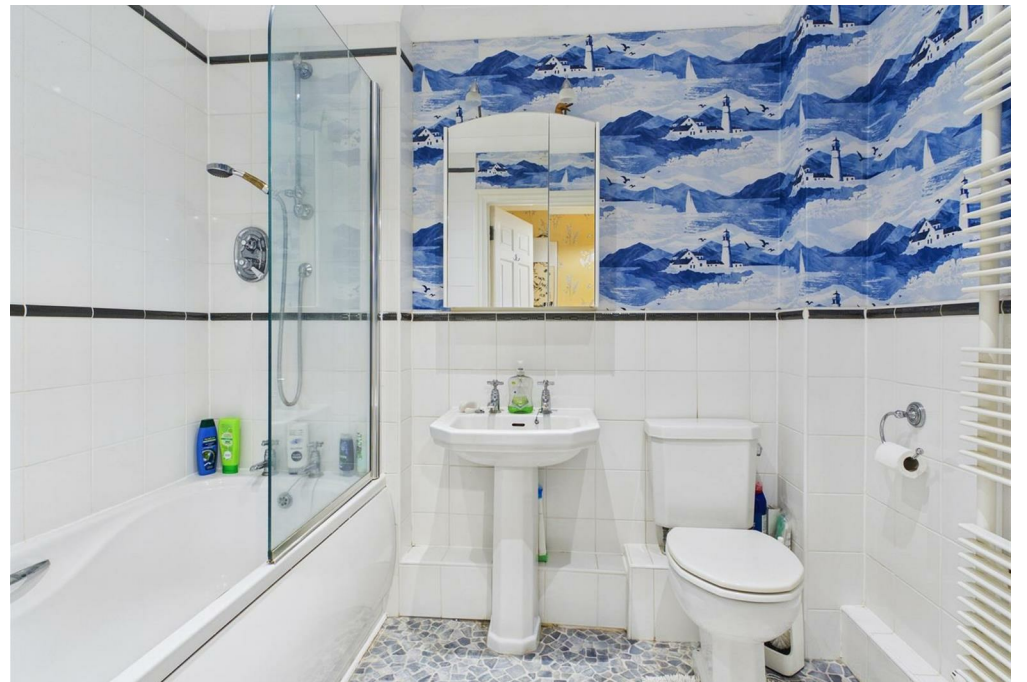


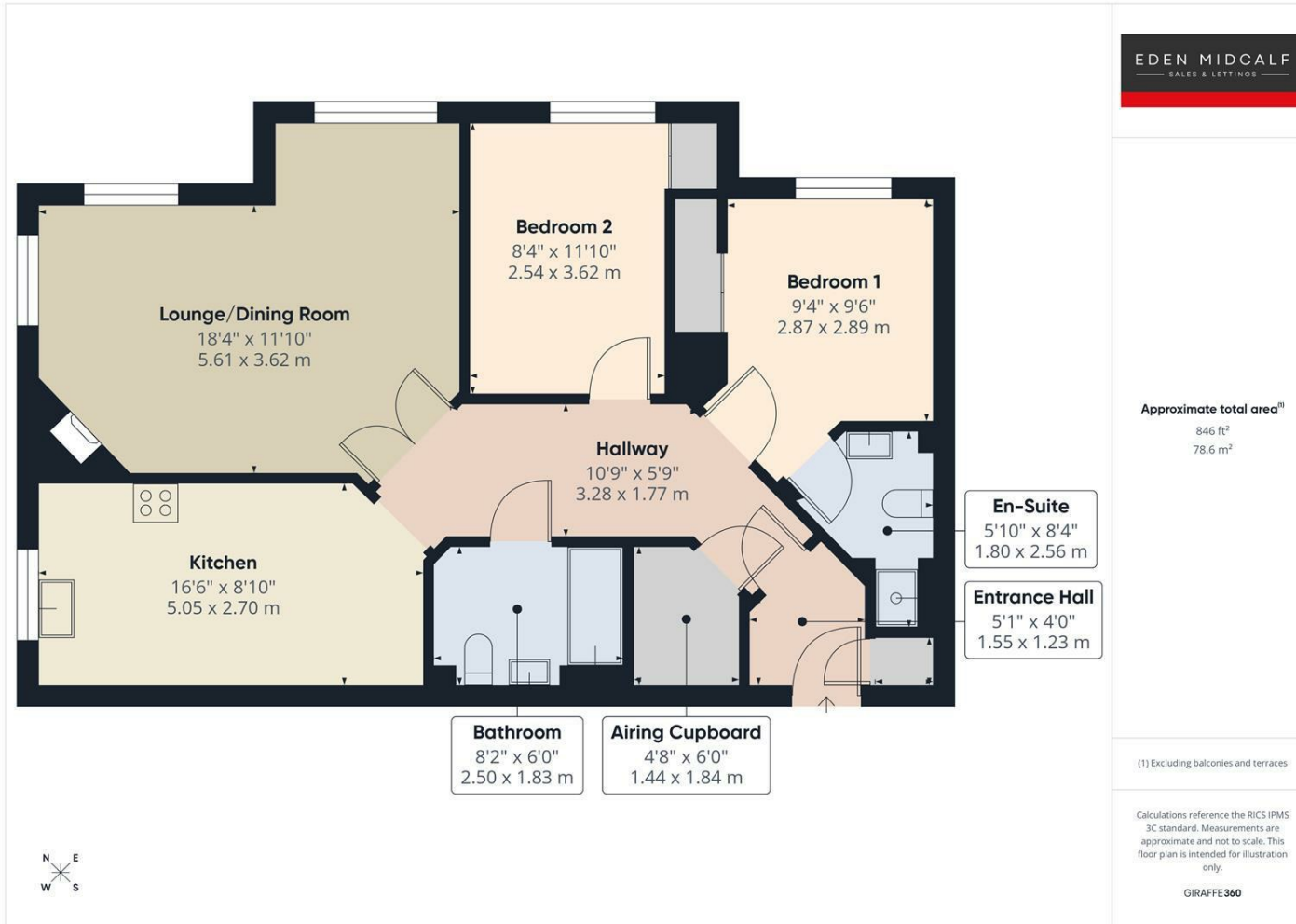
2



1







LOCAL AUTHORITY

TENURE

Leasehold

COUNCIL TAX BAND

E

VIEWINGS

By prior appointment only

Energy Efficiency Rating

	Current	Potential
<i>Very energy efficient - lower running costs</i>		
(92 plus) A		
(81-91) B		
(69-80) C		
(55-68) D	63	63
(39-54) E		
(21-38) F		
(1-20) G		
<i>Not energy efficient - higher running costs</i>		
England & Wales	EU Directive 2002/91/EC	

Agents Note: Whilst every care has been taken to prepare these particulars, they are for guidance purposes only. All measurements are approximate and are for general guidance purposes only and whilst every care has been taken to ensure their accuracy, they should not be relied upon and potential buyers/tenants are advised to recheck the measurements.

EDEN MIDCALF
SALES & LETTINGS

28 High Street
Kinver
DY7 6HF

01384 878000

<https://www.edenmidcalf.co.uk/>
us/